



ORACLE[®]

Platinum Partner

Cloud Select
North America



What's New with the JD Edwards Tools

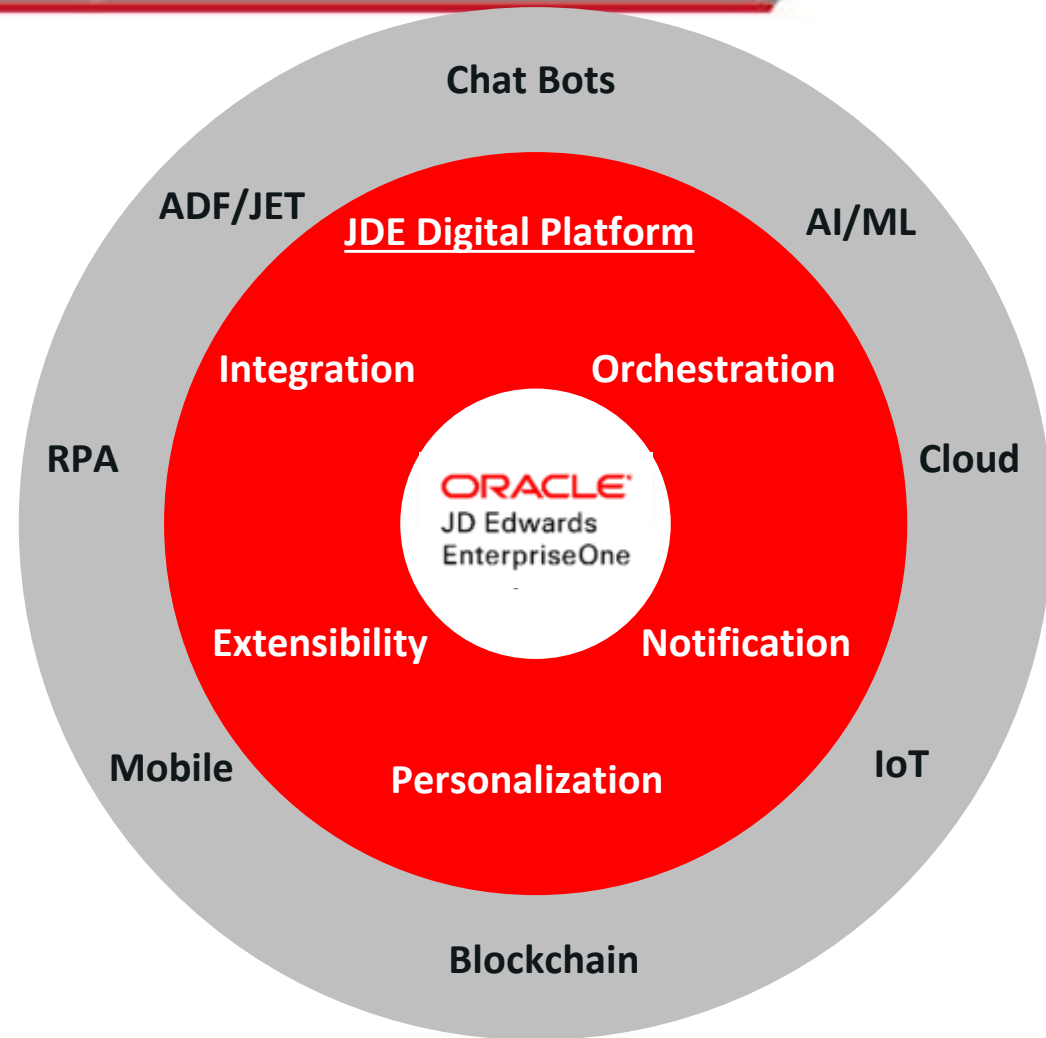
JDE Digital Platform

Evolutionary & Layered

- Preserve & leverage value
- Continue to drive automation
- Metadata, low code, no code

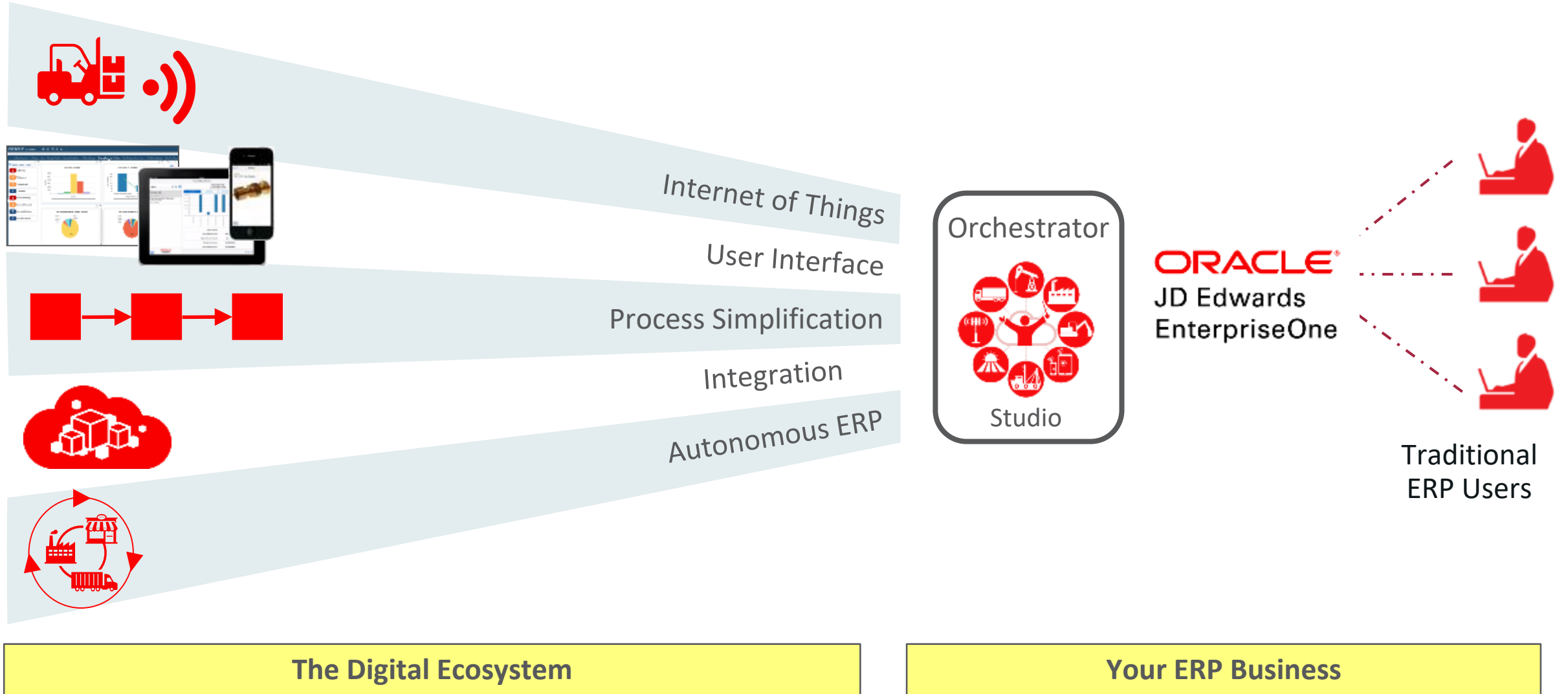
Benefits

- Reduce Manual
- Compress processes
- Eliminate error
- Business/IT friction and choke point
- Future Proof

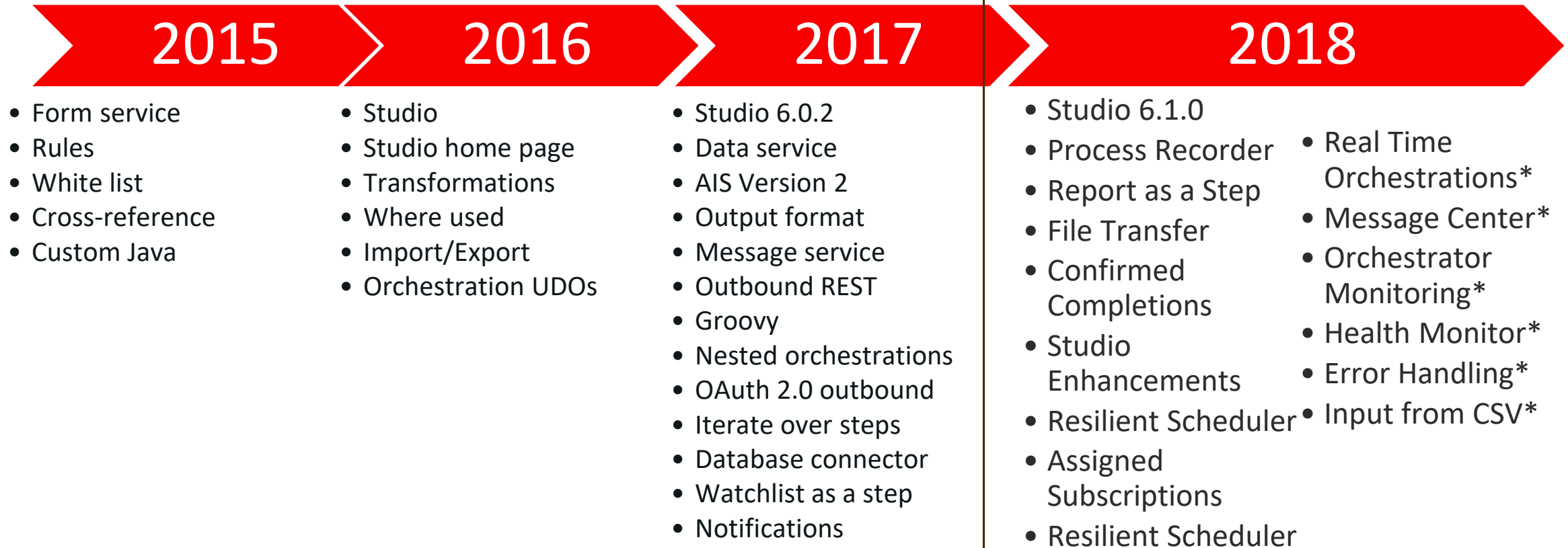


Enablement Framework

A Gateway to Digital Transformation



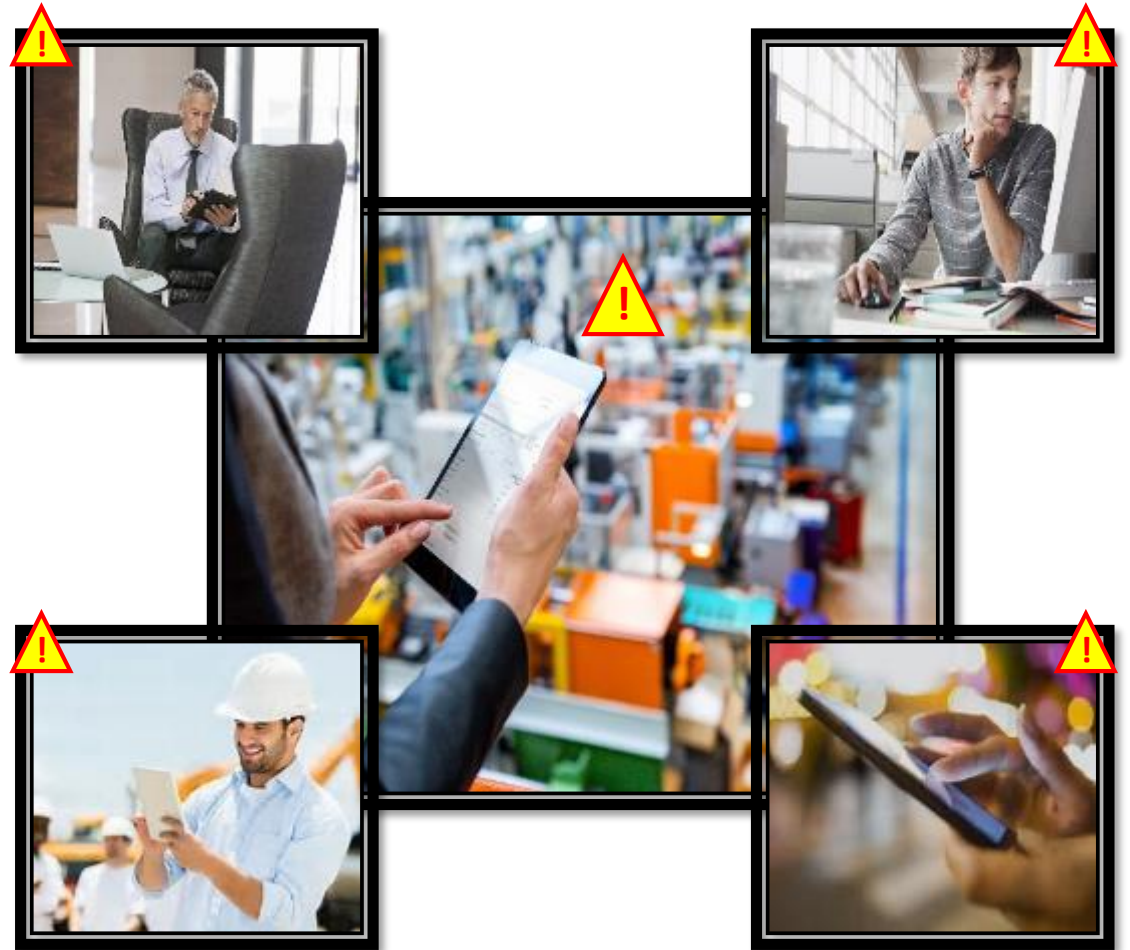
JD Edwards EnterpriseOne Orchestrator



* Planned

Notifications

- Keep workers in touch and informed about critical events even when they are away or not signed on to EnterpriseOne
- Detect important events or conditions based on JDE business data or external systems
- Send custom messages and application links to subscribers via the EnterpriseOne user interface, Work Center, or e-mail
 - Low inventory
 - Shipment arriving
 - Equipment down
 - Any JDE data. Any external data



Notifications for Long Running UBE

A screenshot of a software interface showing a notification dropdown menu. The menu is open, displaying three notifications. Each notification includes a blue circular icon, a title, a timestamp, and a trash icon. The notifications are:

- Long Running Job: R09801_ZJDE0002**
04/16/2018 14:35:03
- Order Received - Tablet**
04/09/2018 14:14:29
- Order Received - Emergency Motor**
04/09/2018 14:14:25

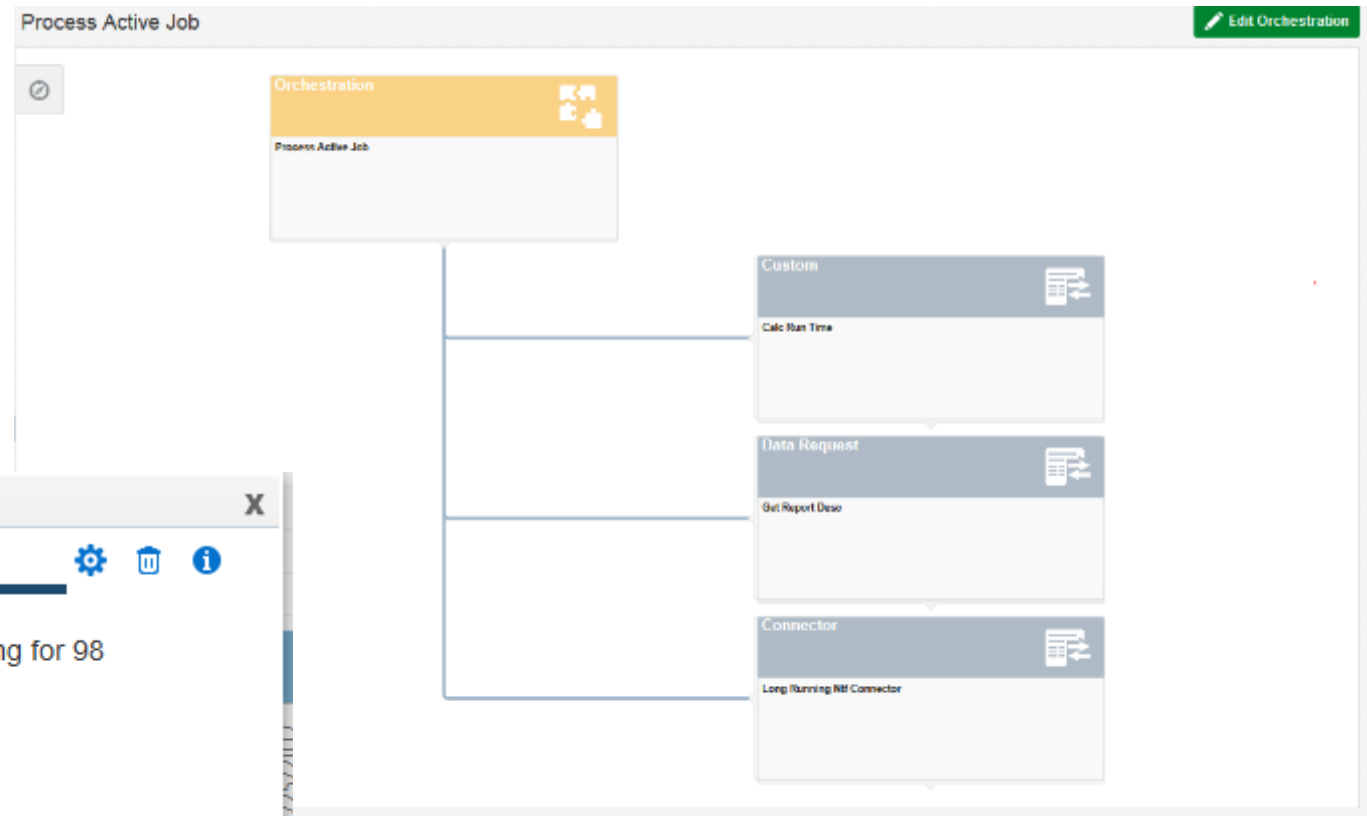
At the bottom of the dropdown, it says "Showing 3 of 3 Notifications".

A screenshot of a "Notification Detail" window. The window title is "Notification Detail" with a close button (X). The main content area displays the following information:

Long Running Job: R09801_ZJDE0002

General Ledger Post (R09801_ZJDE0002) submitted by JDE has been running for 98 hours and 6 minutes. Job ID: 48

[Submitted Job Search](#)



Orchestrator and Notification Enhancements

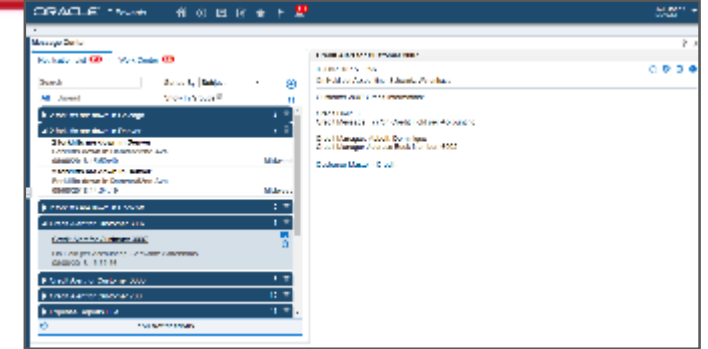
Planned

Message Center

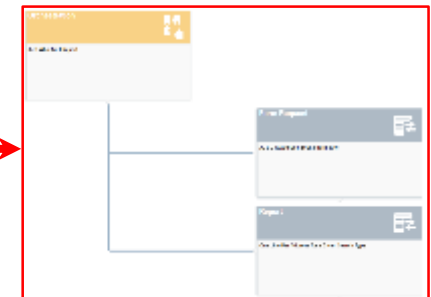
What you need to know.
What you need to do.

- Message Center
 - Notifications and Traditional Work Center messages
 - Ability to search, sort and group
- Orchestrator Monitoring
 - Health of orchestration at a glance
 - Improved diagnostics
- Real Time Orchestrations
 - Launch an Orchestration from a Table Event
 - Perform actions real time

Orchestrator Monitor



Launch from a Table Event



Extensibility Framework

Ways to Tailor JD Edwards



Personalization

UI changes to improve the experience of each business user



Configuration

Setup EnterpriseOne to meet the needs of the organization's business processes



Extensibility

New and changed functional flows that extend business logic

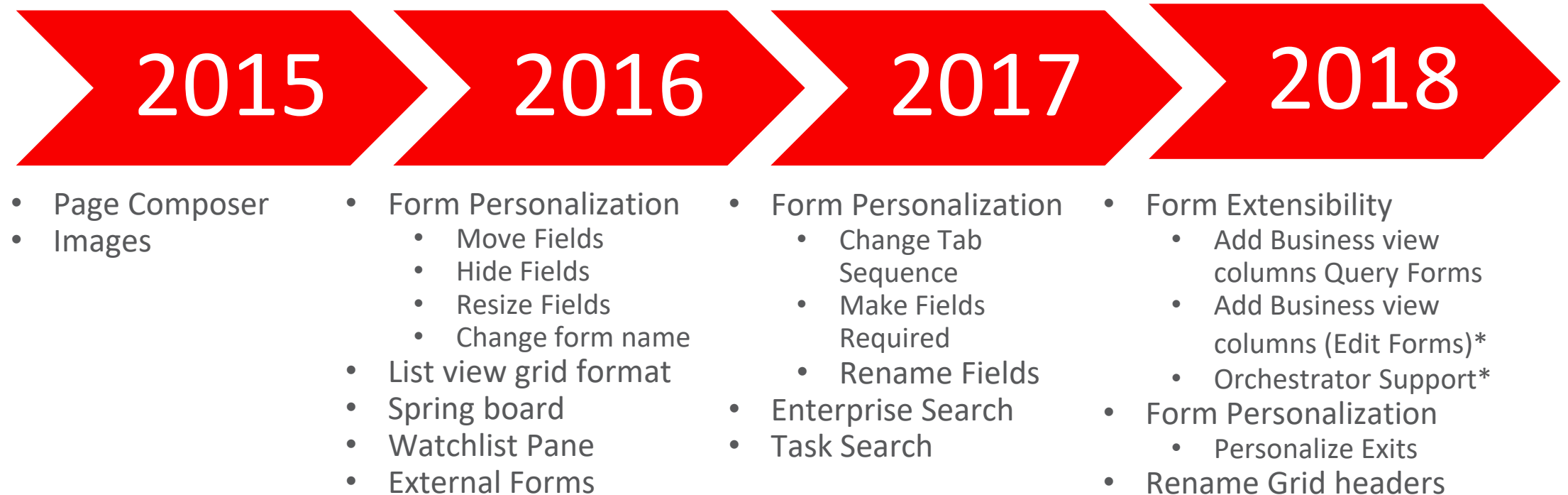


Customization

Technical changes to forms, logic and database to solve company-specific business requirements

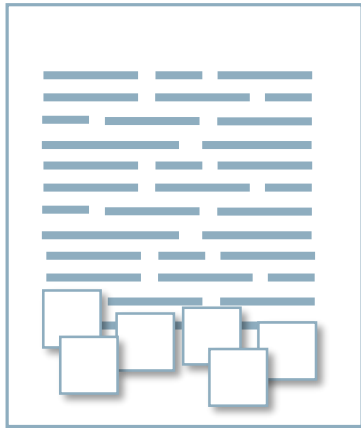
JD Edwards EnterpriseOne Frameworks

Continuous Stream of Enhancements

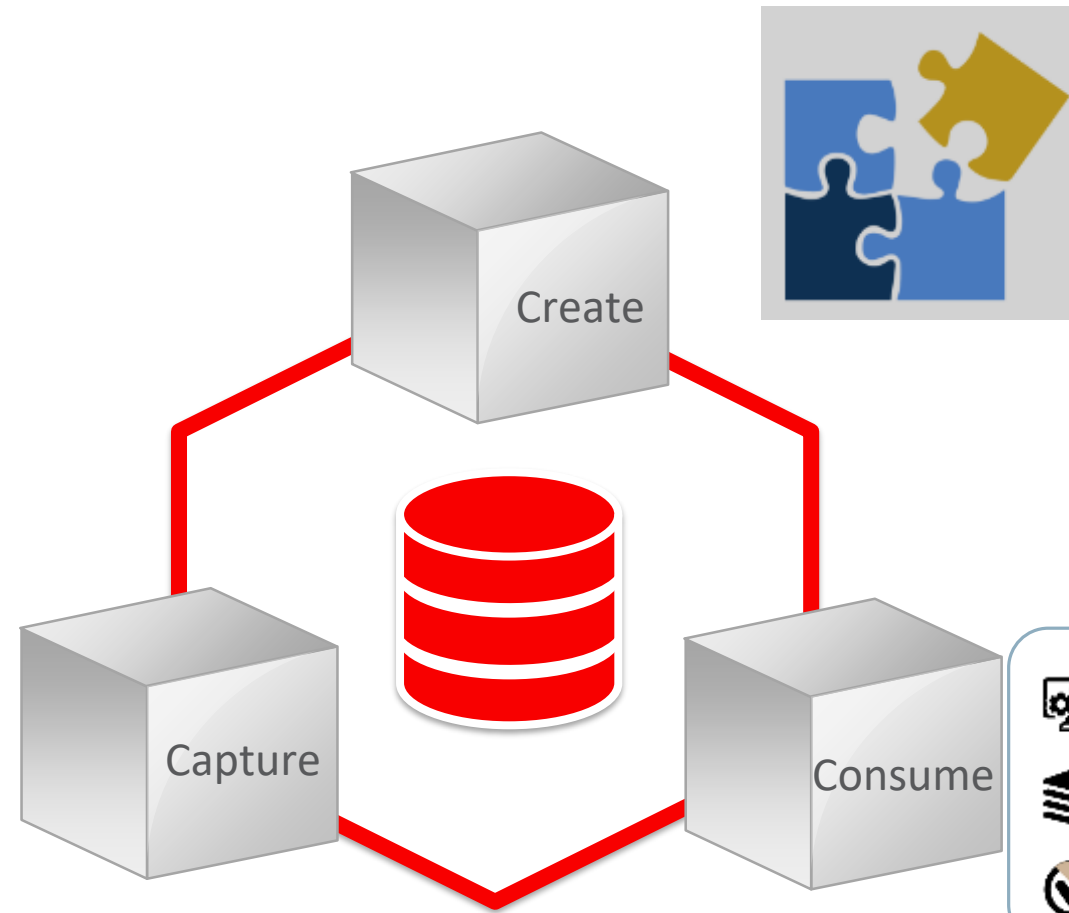


* Planned

Adding Business View Columns on Forms



- ✓ Capture additional information
- ✓ Meet industry and regional additional data requirements
- ✓ On the glass



✓ Create Holistic Solution

- ✓ Build solution by using additional information in frameworks
- ✓ Without creating barriers for continuous adoption

✓ Consume in Frameworks

- ✓ Orchestration can now transact with additional information
- ✓ Personalize form, create alerts, connect using Café One etc.

Application Extensibility

Tailor without customization

The screenshot shows the 'Order Header' form with the following sections and fields:

- Order Header** (selected tab):
 - Order Number: [] OP
 - Branch/Plant: []
 - Currency: [] Exchange Rate: [] Base: [] ☒ Foreign
 - Address Numbers**:
 - Supplier: []
 - Ship To: []
 - Buyer: []
 - Carrier: []
 - Dates**:
 - Order Date: []
 - Requested: []
 - Promised Delivery: []
 - Cancel Date: []
 - Payment Terms**:
 - Pmt. Remark: []
 - Description: []
 - Print Message: []
 - Tax Expl Code: [] Hold Code: [] Blank - Hold Codes 42/HIC
 - Tax Rate/Area: []
 - Certificate: [] Retainage %: []
 - Tax ID: [] Ordered By: JOE
 - Person/Corp. ID: [] Order Taken By: []
 - Payment Terms: [] Net 30 Days AIA Document: ☒ Y
- Additional Properties** (tab):
- Category Codes** (tab):
- Messages**: []

- ✓ **Reduced Complexity**
- ✓ **Retire Customizations**
- ✓ **Simplified Data Entry**
- ✓ **Personalize on the glass**

The screenshot shows the 'Order Header' form after tailoring, with the following changes highlighted by blue callouts:

- Remove Exits**: Points to the top navigation bar.
- Removed undesirable headers**: Points to the top navigation bar.
- Change Tab Sequence**: Points to the 'Additional Properties' tab.
- Change Labels**: Points to the 'Supplier' field label.
- Default Query**: Points to the 'Supplier' field.
- Mark the desirable field as Mandatory**: Points to the 'Order Date' field.
- Required fields from other tabs**: Points to the 'AIA Document' field.
- Add fields from Business View**: Points to the 'Person/Corp. ID' field.

User Defined Objects Management



Solves Business Problem



Saves Time & Money



Citizen Guardian



Control & Configure

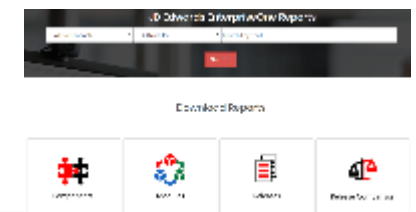
System Admin Enablement Framework

JD Edwards System Administration

Continuous Stream of Enhancements

- Server Manager – Foundation and REST API Enhancements
- Enhancements to Simplify Staying Current
- JD Edwards with Exa Data Cloud Service
- Server Manager As Service Provider
- Platform Neutral Provisioning Windows
- Simplified Upgrade on a One-Click Provisioned Target
- Store Media Objects in Database or File System
- Objects to Database
- Oracle Cloud Marketplace Images for JD Edwards EnterpriseOne Applications 9.2
- Platform Neutral Provisioning - System I - SMC Support
- JD Edwards EnterpriseOne Migration Utilities for Windows
- iOS 9.0.1 Certification
- Currency Support in Data Aggregation
- Universal Cache Browser
- Management of Internet of Things Orchestrator Components as User Defined Objects
- Track Object Usage
- One-Click Provisioning
- JDE Cloud Provisioning Console
- Mobile Cloud Service: Single Sign-on and Support for Mobile Watch-lists
- Integration to Oracle Content and Experience Cloud Service
- JD Edwards One-Click Provisioning for Oracle Technology Stack

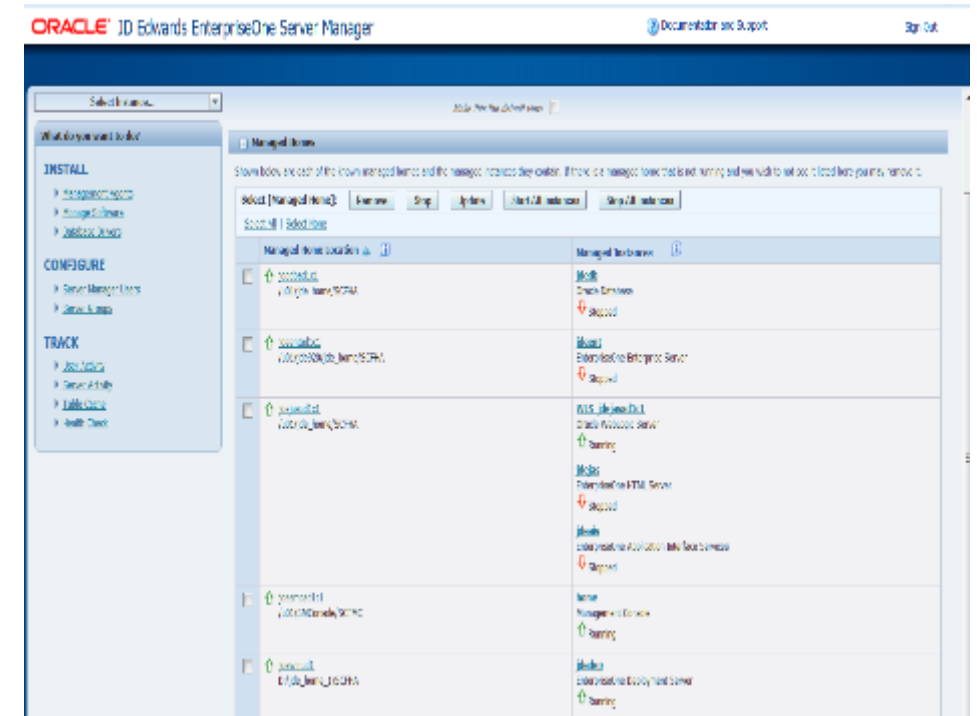
**See Release
Comparison report
in Product Catalog**



Service Enablement of Server Manager

- What:
 - Server Manager is already equipped with provisioning, monitoring and management capabilities
 - Introduced a REST Enablement layer in Server Manager to expose these functionalities as REST APIs
- Why:
 - Enable automation of common tasks
 - Expose SM functionality to other tools
 - Leverage standard based orchestration tools
- How (REST APIs for)
 - Provisioning
 - Configurations (ini)
 - Monitoring
 - Change Management (Tools Patching)

Foundation for Future Simplifications



EnterpriseOne Health Checks from Server Manager

- What:
 - Automated health monitoring capability to improve the availability and reliability of JD Edwards EnterpriseOne servers
 - REST API enablement for Health Checks
- Why:
 - Enable automated assessment of existing JD Edwards EnterpriseOne environments
 - Leverage in other End to End automation
- How:
 - Enhanced Server Manager functionality
 - Enhanced Server Manager UI
 - Enabled REST APIs for health checks

Health Check Result

Health Check Result

Target Type Target Machine Server Group All Servers Run Health Check

920_jas		RTE2507		TEST13_BSSV		920_ent	
Type:	HTML Server	Type:	Transaction Server	Type:	Business Services Server	Type:	Enterprise Server
User, Environment:	JDE/JDV920	User, Environment:	No Data, No Data	User, Environment:	No Data, No Data	User, Environment:	JDE/JV920
Last Run:	28 Jul 2017 10:25:11 CDT	Last Run:	28 Jul 2017 10:25:11 CDT	Last Run:	28 Jul 2017 10:25:11 CDT	Last Run:	28 Jul 2017 10:25:18 CDT
Status:	✓	Status:	✗	Status:	✗	Status:	✓
Name	Status	Name	Status	Name	Status	Name	Status
Instance State	RUNNING	Instance State	STOPPED	Instance State	UNKNOWN	Instance State	RUNNING
Check JAS LOGIN	✓	DB Connection	NOT RUN	Check BSSV Login	NOT RUN	PORTTEST	✓
Check JAS APPLICATION	✓	RTE Trigger	NOT RUN	Check BSSV DB Service	NOT RUN	RUNUBE	✓
Check UBE	✓	RTE Application	NOT RUN	Check BSPN Execution	NOT RUN	BSFN	✓
Check CTR	✓						

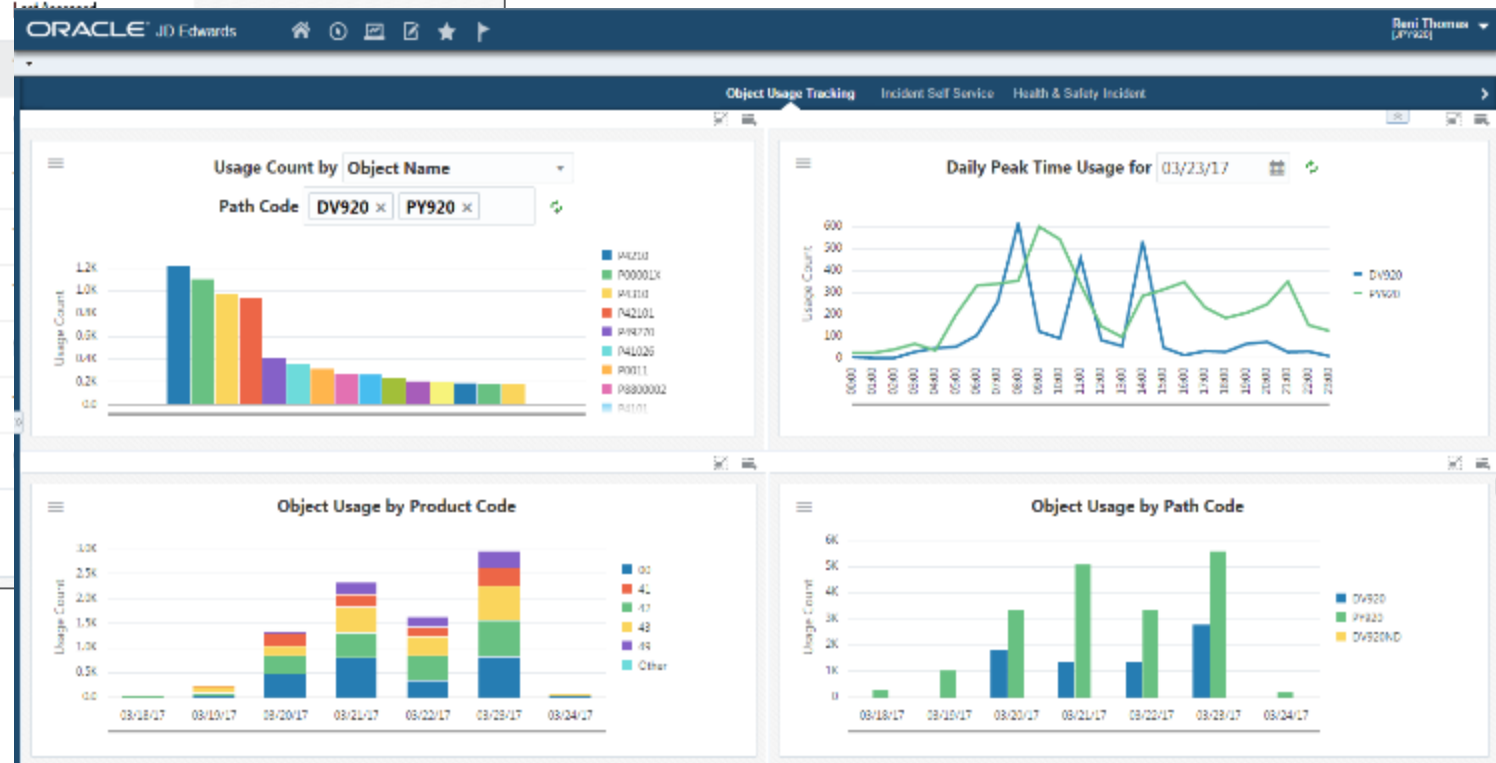
BSSV2507		TEST13_RTE		oraDBTest	
Type:	Business Services Server	Type:	Transaction Server	Type:	Database Server
User, Environment:	No Data, No Data	User, Environment:	No Data, No Data	User, Environment:	JDE/No Data
Last Run:	28 Jul 2017 10:25:18 CDT	Last Run:	28 Jul 2017 10:25:18 CDT	Last Run:	28 Jul 2017 10:25:18 CDT
Status:	✗	Status:	✗	Status:	✗
Name	Status	Name	Status	Name	Status
Instance State	UNKNOWN	Instance State	RUNNING	Instance State	RUNNING
Check BSSV Login	NOT RUN	DB Connection	✓	Connection	✓
Check BSSV DB Service	NOT RUN	RTE Trigger	✗	Configuration	✓
Check BSPN Execution	NOT RUN	RTE Application	✓	Schema Deployment	✗
				E1 User Account	✓

Object Tracking and Impact Analysis

ORACLE JD Edwards EnterpriseOne Impact Analysis Tool

ESU Name: J19735 Available Objects: 8 Used Objects: 5 Customized Objects: 3 Path Code: F0020

Object Name	Object Used	Objects Customized	Last Customized	Customized By	Last Patched	Last ESU	# of Hits
P42101	✓	✓	07/31/2016	MARK	08/15/2016	JN1980	500
P54903	✗	✗	-N/A-	-N/A-	-N/A-	-N/A-	0
N1701980	✓	✗	-N/A-	-N/A-	02/05/2016	JN1980	250
P4310	✓	✓	08/20/2016	MARK	02/15/2016	JN1980	400
N3101810	✓	✗	-N/A-	-N/A-	02/15/2016	JN1980	300
P17708SS	✗	✗	-N/A-	-N/A-	-N/A-	-N/A-	0
B4200311	✓	✗	-N/A-	-N/A-	08/10/2016	JN1980	400
R54R100	✗	✓	05/01/2015	MARK	08/15/2016	JN1980	0



Improving the Foundation

64-Bit Enablement

Planned



-
- What**
- No impact to business processes and data
 - Enablement for Enterprise server to round out 64-bit architecture
 - Customers have choice and control on when to enable 64-bit
-

- Why**
- Maximize the current JD Edwards architecture
 - Future proof your JD Edwards investment and avoid hardware and software obsolescence
 - Positioned to enable future JD Edwards product innovation
 - Performance Improvements
-

- How**
- Support Apps Release 9.2
 - Enabled with Tools Release 9.2.3 (Linux, Microsoft, IBM i)
 - Utilities to automate process
-

- When**
- Upgrading to applications release 9.2
 - As part of an upgrade to the latest Tools update
 - As part of your continuous adoption strategy
 - As driven by technology and business requirements
-

Upcoming Certifications

- Microsoft Visual Studio 2017 (Enterprise Server, Deployment Server, Dev client)
- Mozilla Firefox 60 ESR
- Apple iOS 12
- Oracle Database 18c
- Oracle Access Manager & Oracle Internet Directory “12c”

Retiring

Starting with 2018 (9.2.3)

- Microsoft Windows Server 2012
- Microsoft Visual Studio 2010
- Mozilla Firefox 45 ESR

Starting with 2019 Winter

- Microsoft Windows 7, 8.1
- Microsoft SQL Server 2014
- Oracle Weblogic Server 12.1.3

- **Workflow Modeler (64 Bit Foundation)**
- **Unified Logon on Windows Server**
- **JDBNET**





ORACLE®

Platinum Partner

Cloud Select

North America